



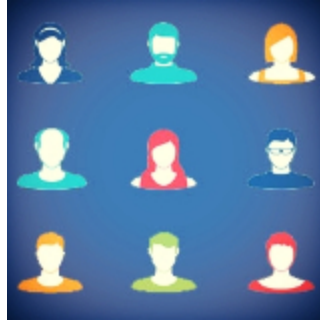
The Kentucky Retirement Systems Board of Directors sets the final CERS employer contribution rates pursuant to KRS 61.565 and 61.702. The most recent actuarial valuations were performed by the Kentucky Retirement Systems actuary (Cavanaugh Macdonald) for the fiscal year ended June 30, 2016. The CERS employer contribution rates as noted below were approved by the Kentucky Retirement Systems Board of Directors and will be in effect on July 1, 2017.

Fiscal Year 2017-2018:

CERS Nonhazardous.....	19.18%
CERS Hazardous.....	31.55%

Please distribute copies of this memorandum to the individuals responsible for your budget.

CERS Employer Contribution Rates for Fiscal Year 2017-2018 Memo



Have questions?

[Please call one of our Employer Team Members](#)

Our mailing address is:

Kentucky Retirement Systems
Perimeter Park West
1260 Louisville Rd.
Frankfort, Ky. 40601

Questions:

502-696-8800 (Frankfort)
1-800-928-4646 (Toll Free)

Want to change how you receive these emails?
You can [update your preferences](#) or [unsubscribe from this list](#)

